



Photograph by courtesy of "Yorkshire Evening Post"

VERSUS

SWINDON TOWN

SATURDAY, 14th SEPTEMBER, 1963

OFFICIAL PROGRAMME 4d

DRANSFIELD MOTORS LTD.

SELF-DRIVE HIRE CARS

'Phone : Leeds 22488 and 21175

63 SAVILLE STREET, WELLINGTON STREET, LEEDS 1

49th (Yorkshire) Signal Regiment (T.A.)

Why not Join your County T.A. Signal Regiment ?

VACANCIES FOR MEN AND WOMEN

CALL OR 'PHONE

GIBRALTAR BARRACKS, CLAYPIT LANE, LEEDS
or T.A. CENTRE, COLLIERGATE, YORK

Telephone 27003
Telephone 25361

READY MIXED CONCRETE



ANY SPECIFICATION ANY QUANTITY ANY TIME
FROM

TRUMIX CONCRETE

ARK STREET, CROSS GREEN LANE, LEEDS 9
CLECKHEATON ROAD, LOW MOOR, BRADFORD

Telephone 31001
Telephone 77344

PATCHETT

AND COMPANY LIMITED

FOR ALL FABRICATED AND STRUCTURAL

STEELWORK

WESTLAND ROAD, LEEDS 11

Telephone 75858

MAUDE BROS.

(CONTRACTORS) LTD.

WHITEHALL ROAD. LEEDS 12

FOR ALL YOUR

HAULAGE

DEMOLITION

BULK EXCAVATIONS

ROAD MATERIALS

PLANT HIRE

LEEDS UNITED A.F.C. LTD.

Registered Office and Ground: ELLAND ROAD
Telephone 7-6037/8 Telegrams "Football, Leeds"

Hon. President

The Right Hon. THE EARL OF HAREWOOD, LL.D.

Hon. Vice-Presidents

JOHN H. BROMLEY, Esq. S. L. BLENKINSOP, Esq.

Directors

H. L. REYNOLDS, Esq., Chairman

A. MORRIS, Esq.

Ald. P. A. WOODWARD,

R. R. ROBERTS, Esq.

Vice-Chairman

S. G. SIMON, Esq.

S. BOLTON, Esq.

Team Manager D. REVIE

M. CUSSINS, Esq.

General Manager and Secretary

H. A. MARJASON, Esq.

C. J. WILLIAMSON, F.I.A.C.

SATURDAY, 14th SEPTEMBER, 1963

SWINDON OFF TO EXPRESS START

To win six consecutive matches is good going in any class of football but to win the first six off the reel on a first venture in a higher division is a magnificent start, and that is what has been achieved by Swindon Town, our visitors to-day and proud leaders of the Second Division.

Swindon come to Elland Road as the "babes" of the Second Division, along with Northampton Town, and they bring a side even more youthful than that which has worn United's colours during the last twelve months.

The average age of Swindon's first team is a mere 21, and that suggests that if their place in the Second Division is consolidated this term—and that flying start must have built up enormous confidence in their ability to stay in the higher company—the side is one that can stay together to build famously on last term's promotion.

That promotion outfit was, in fact, gathered together at a total cost of £5,500, and Manager Bert Head has been in the peculiar position of having spent more than that sum on a new player—Graham French, from Shrewsbury—and having to wait to draft him into the side because of the fine displays of 17-year-old outside-left Donald Rogers.

Telephone 36581/2



**LOWFIELDS ROAD
SERVICE STATION**

(PANELCRAFT ENGINEERING LTD.)

LOWFIELDS ROAD, LEEDS 11



ANY MAKE OF CAR SUPPLIED

24-HOUR BREAKDOWN SERVICE

PANEL BEATERS

CELLULOSING

WHAT CAUSES CANCER ?

is a question which only research can answer.

But research is costly. Will you help just a

little by sending a donation to the

BRITISH EMPIRE CANCER CAMPAIGN

11 Grosvenor Crescent, London, S.W.1

Manager Head has been at Swindon for about six years—going to the County ground a couple of seasons after Maurice Lindley, United's chief scout, vacated the post of manager-coach there. Mr. Head's young men—he has 48 players available, including a dozen or so apprentices, for his various teams—brought Swindon to promotion through the use of a system of fast and simple football.

They won 18 of their 23 home matches on the way to promotion, although they returned with both points from only four away matches they shared the spoils no fewer than a dozen times.

Inside-right Ernie Hunt scored 24 of their 87 League goals and this brought him the unusual distinction for a player with a Third Division club of gaining England Under-23 honours. He played against Roumania at Bucharest in June.

Centre-forward John Smith collected 19 Third Division goals and we heard good reports of outside-right Mike Summerbee, who has soon got on the goal trail again along with local boy Roger Smart and William Atkins, a 6 ft. 2 ins. forward from Aston Villa, who deputised for a couple of matches when Ernie Hunt went down with tonsillitis.

Like Mr. Revie, Manager Head has not been afraid to bring young players into his defence, and when United had Gary Sprake, Paul Reaney and Barrie Wright as their goalkeeper and full-backs last season

A. & P. STORES

24 LEEDS BRIDGE Tel. 34215

We can supply all your needs for
"DO IT YOURSELF"

OPEN ALL DAY SATURDAY

Timber, Hardboard, Nails, Screws
Hand and Power Tools, Paint, Paper,
Brushes, Garden Tools & Requisites,
Fluorescent Fittings, Electrical
Accessories, Ladders and Platform
Steps, etc.

We invite you to walk round
at your leisure

Credit Facilities
Available

Club Checks
Taken

FINCH BATTERIES

Up to £4 allowed on your
Old Battery against a New
Heavy Duty Battery

**TWO YEAR UNCONDITIONAL
GUARANTEE**

28 DEWSBURY RD., LEEDS 11

Telephone 30591

GREENWOOD & BATLEY LIMITED

ALBION WORKS, ARMLEY ROAD, LEEDS 12
Manufacturers of Cold Heading Machines, Electric Trucks
and Locomotives, Turbines, Hydraulic Equipment, etc.

VACANCIES FOR APPRENTICES AND EXPERIENCED
CRAFTSMEN

APPLY AT WORKS or RING 20011

their combined ages were several months more than that of a similar trio which Mr. Head fielded some time earlier. Norman Trollope, one of the trio, will probably be in the side to-day.

Norman Hunter's displays at left-half for United have inspired comments that he has Under-23 potential, and the same is being said at Swindon about their No. 6, Bobby Woodruff. Centre-half Ken McPherson was previously with Newport County, and right-half Keith Morgan was an ever-present in League matches last season.

Swindon had a useful run in the F.A. Cup last season—incidentally they reached the semi-final, as a Southern League club, in 1910 and 1912; they were quarter-finalist in 1911 and 1924 and have reached the fifth round three times. After beating Reading and Yeovil, they won away at Luton (they have swapped divisional status with the "Hatters" since then) before going down 5-1 at home to Everton, who ended up as League champions.

Even when it comes to nicknames, Swindon have plenty to shout about, for they have the choice of three. They are variously known as the "Moonrakers" (from the Wiltshire legend)—nobody can scoff at their present ambitions; the "Robins" (from their colours)—they've much to chirrup about; and the "Railwaymen"—and obviously they're on the right lines these days.

They came into the Football League as original members of the Third Division in 1920 and this is their tearaway start to their first season in the Second Division :

Scunthorpe (home) won 3-0; Grimsby Town (away) won 2-1;
Portsmouth (away) won 4-1; Grimsby Town (home) won 2-1;
Rotherham United (home) won 3-1; Manchester City (home) won 3-0.

THIS SPACE TO LET

For terms apply

SPORTS PUBLICATIONS, 46 Watford Way, London, N.W.4

IF YOU LOVE ANIMALS AND
HATE CRUELTY REMEMBER THE

R. S. P. C. A.

and please send a donation to

THE CHIEF SECRETARY, R.S.P.C.A.
105 JERMYN STREET, LONDON S.W.1

That victory over Manchester City, by the way, was achieved before a crowd of 28,173, which ran very close to the County Ground's record attendance of 28,400 for a Cup-tie against Stoke City in 1952.

Compare Swindon's results with those of United against the same a hot pace. But to-day United have ground advantage and are defend-opposition and it will be seen that the Swindon boys are really setting in a 100 per cent. home record.

Something has got to give this afternoon—Swindon's 100 per cent. start or United's 100 per cent. home record. It has the makings of a splendid afternoon's entertainment.

United made it three home wins out of three when they accounted for Portsmouth by 3-1 on Wednesday night and were by no means flattered by the result for the ball did not run kindly for the lads at vital moments.

Billy Bremner, Jim Storrie and Bobby Collins might, with better fortune, have added to the goals which came from Jim Storrie (27 minutes), Don Weston (65 minutes), and a Billy Bremner cracker-jack (82

HYPNOTISM FOR HEALTH

Send for FREE booklet
"How Hypnotism can Help You"
write, call or phone

M. A. HAMID

(HYPNOTHERAPIST)

15 years' practical experience in
hypnosis

Consultation free and confidential

595 Scott Hall Road, Leeds 7

'Phone 681326

Consulting Hours :

Wed., Thurs., Fri., 11 a.m.—8 p.m.

Sat. and Sun., 11 a.m.—6 p.m.

SUPERVISORS, FOREMEN AND TECHNICIANS

YOUR OWN TRADE UNION
A.S.S.E.T.
MAKES YOU 30,000 TIMES
STRONGER

JOIN NOW

*Association of Supervisory
Staffs, Executives and
Technicians*

DISTRICT SECRETARY :
44 FOUNDRY WALK, LEEDS 8



NEW ALL REGULAR ARMY

Offers you Plenty of Sport
Adventure · Travel · Trade Training

Apply: Major J. A. FOSS, M.B.E.,
Army Information Office,
36 Wellington St., LEEDS 1. Tel: 25819

RENDEZVOUS COFFEE BAR

138 ROUNDHAY ROAD
LEEDS 8

Open until Midnight for
Snacks, Grills, etc.

UNDER NEW MANAGEMENT

minutes), with one from John McLelland in reply in the 72nd minute when Don Weston was off the field injured and United were reduced to ten men.

With seven points from five matches, United are keeping pace with the three North-Eastern clubs which are bracketed behind Swindon and there is no doubt that to-day's four-pointer at Elland Road is one that will have the attention of all with promotion interest and aspirations.

A win for United would almost certainly pave the way for an exciting battle for the leadership in the next few weeks and make for an exhilarating Second Division.

It will not be easy to stay in this fight and this afternoon we again look forward to the encouragement and support of our followers. We at Elland Road—and none more than the lads out there—do appreciate the fact that these days the crowd is behind United, with them and for them although, at the same time, showing appreciation for skill and endeavour no matter whether provided by our own or opposing players.



GLOVERS CHEMICALS

*A Highly Trained Team who Score in the
Industrial Field*

With Chemicals used everywhere from
Textiles to Tankers, Perfumery to Plastics
Ceramics to Civil Engineering

GLOVERS (CHEMICALS) LTD., Wortley Low Mill's, Leeds 12
Telephone 63-7847/8/9 Telegrams "GLOKEM", Leeds

AFTER THE MATCH visit the
CLUB CABARET

Yorkshire's Gayest Nightspot

RESTAURANT
CABARET
CASINO

Fully Licensed

Open daily from 3 pm.

97 NORTH STREET, LEEDS 7

Table Reservations—Leeds 32230

PLEASE HELP THE DEAF
AND DEAF-BLINDED

BY A GIFT TO

National Institute

for the
Deaf

(Dept. S.A.)



105 GOWER STREET

LONDON W.C.1

DENNIS AND BERNIE
INVITE YOU TO THE
CLUB CASINO

WHERE
CHEMIE-DE-FERE AND
ROULETTE
ARE PLAYED NIGHTLY

Good Food Good Company
All our Old Friends Welcome
3 BRUNSWICK STREET
Telephone: Leeds 21035

The Children's Research

is the only national fund devoted solely of children's illnesses. Funds are used for the encouraging opportunities to seek standing diseases affecting children and their parents. Representatives and Agents for our fund are required.

Please write to:

THE CHILDREN'S RESEARCH FUND
6 CASTLE STREET, LIVERPOOL 2

LEEDS UNITED

Right

Garry SPRAKE

2—Paul REANEY

4—Billy BREMNER

5—Jack CHARLTON

8—Don WESTON

10—

7—Johnny GILES

9—Jim STORRIE

Referee:

Mr. L. W. Faulkner
(Liverpool)



11—ROGERS

10—SMART

9—SMITH

6—WOODRUFFE

5—McPHERSON

3—TROLLOPE

Left

TURNER

Colours:

Red Shirts, White Edging

SV

Will YOU Help to give Spastics a chance

FUNDS ARE URGENTLY REQUIRED

NEARLY 53 NATIONAL AND LOCAL TREATMENT CENTRES AND SCHOOLS (40 ARE ALREADY OPERATING) BESIDES RESEARCH WHICH MAY SAVE THOUSANDS OF CHILDREN THE CRUEL HANDICAPS OF CEREBRAL PALSY.

£1 MILLION MUST BE FOUND BEFORE 1964

Please help by sending donations to
NATIONAL SPASTICS SOCIETY, 28 FITZROY SQUARE

Research Fund

A fund devoted solely to research into the causes of cerebral palsy. Funds are urgently required to finance opportunities to seek cures for some of the out-
affecting children and to reduce suffering. Agents for our fund-raising competitions are

SEARCH FUND
POOL 2

Colours :
All White

Garry SPRAKE Left
3—Grenville HAIR
—Jack CHARLTON 6—Norman HUNTER
N 10—Bobby COLLINS
9—Jim STORRIE 11—Albert JOHANNESON



Linesmen :
Mr. G. E. Readle (Yellow)
Mr. L. Haslam (Red)

9—SMITH 7—SUMMERBEE
8—HUNT
5—McPHERSON 4—MORGAN
2—DAWSON
TURNER Right

SWINDON TOWN

Spastics a chance in life?

REQUIRED

CAL TREATMENT CENTRES AND
OPERATING) BESIDES MEDICAL
VE THOUSANDS OF UNBORN
DICAPS OF CEREBRAL PALSY
ND BEFORE 1964

ns to
TY, 28 FITZROY SQUARE, WI



TS PUBLICATIONS," 46 Watford Way, London, N.W.4

RON. JARRETT

LTD.

Scrap Metal Merchants

40-42 WATER LANE
LEEDS II

Telephone 28233

RAIL EXCURSION

CARDIFF

47/6

FOR THE MATCH

FRIDAY NIGHT, 20th SEPT.

LEEDS CITY ... 10.42 p.m.

SATURDAY, 21st SEPT.

LEEDS CITY ... 8.0 a.m.

Return 7.35 p.m Saturday evening

Full details from Stations or
usual Agencies

BRITISH RAILWAYS

THE FABULOUS



Open Nightly 7.30 p.m. to 2 a.m.

MEET THE STARS OF
STAGE, TELEVISION and
RADIO

175 Woodhouse Street, Leeds 6
Telephone 23044

THIS SPACE TO LET
For terms apply
SPORTS PUBLICATIONS, 46 Watford Way, London, N.W.4

LEEDS UNITED FOOTBALL POOL

**Our Second Dividend this week
will amount to over**

£600!

*Apply for an Agency NOW and give YOUR friends a chance
to share in FIVE Dividends each week*

Enquiries welcomed at the Football Pool Enquiry Office (in the Official Car Park) which will be open before and after each First Team home match throughout the season

To LEEDS UNITED FOOTBALL POOL
1 OXFORD PLACE, LEEDS 1 Telephone 20991

Please forward details of a Leeds United Football Pool agency.

NAME (Mr./Mrs./Miss)

ADDRESS

PLEASE HELP THE DEAF AND DEAF-BLINDED
BY A GIFT TO
NATIONAL INSTITUTE FOR THE DEAF
(Dept. S.A.)
105 Gower Street, London, W.C.1

SELL TO BRITANNIA METALS

COPPER

VICKERSDALE

RADIATORS

STANNINGLEY

ALUMINIUM

LEEDS

PHOSPHOR BRONZE, ETC.

Tel. Pudsey 2268

CENTRAL LEAGUE MATCHES AT ELLAND ROAD

MONDAY, 16th SEPTEMBER, kick-off 7.30 p.m.

WOLVERHAMPTON WANDERERS RESERVES

SATURDAY, 21st SEPTEMBER, kick-off 3 p.m.

BLACKBURN ROVERS RESERVES

The Life-boats need YOUR Help!

SEND A CONTRIBUTION, HOWEVER SMALL, TO

**ROYAL NATIONAL LIFE-BOAT
INSTITUTION**

42 GROSVENOR GARDENS, LONDON, S.W.1

FOOTBALL LEAGUE CUP WEDNESDAY, 25th SEPTEMBER

Kick-off 7.30 p.m

LEEDS UNITED versus MANSFIELD TOWN

West Stand 10/6 Lowfields Road Stand 8/6 All Pay

Season Ticket holders should apply for their seats by Saturday, 21st September. Postal Applications should have Coupon A attached and contain remittance for seat and also a stamped addressed envelope.

Please state Row and Seat No.

THE BEST SPORTS AND SKATING EQUIPMENT comes from

JAMES H. FREW, LTD.

THE PRACTICAL SPORTS OUTFITTER

Ex Leeds United, Bradford City and Heart of Midlothian A.F.C.

HAREHILLS CORNER, LEEDS 8

Telephone 42476

EDWARD LEFFEK LTD.

PLUMBERS AND HEATING ENGINEERS
COMPRESSED AIR SPECIALISTS
LABORATORY SPECIALISTS
PLASTIC WELDING AND LEAD BURNING

4 IRON STREET LEEDS 10

'Phone 75652

FOOTBALL LEAGUE FIXTURES AND RESULTS

1963	Result	1964	Result
August		January	
‡28 Rotherham United	H 1—0	4 F.A. Cup (3rd Round)	
31 Bury	H 3—0	11 Manchester City	H
September		18 Swindon Town	A
† 3 Rotherham United	A 2—2	25 F.A. Cup (4th Round)	
7 Manchester City	A 2—3	February	
‡11 Portsmouth	H 3—1	1 Cardiff City	H
14 Swindon Town	H	8 Norwich City	A
‡18 Portsmouth	A	15 (5) Scunthorpe U.	H
21 Cardiff City	A	22 Huddersfield T.	H
28 Norwich City	H	29 (6) Preston N.E.	A
October		March	
† 1 Northampton T.	A	7 Southampton	H
5 Scunthorpe United	A	14 (SF) Middlesbrough	A
‡ 9 Middlesbrough	H	21 Grimsby Town	H
12 Huddersfield T.	A	§27 Newcastle United	A
19 Derby County	H	28 Derby County	A
26 Southampton	A	*30 Newcastle United	H
November		April	
2 Charlton Athletic	H	4 Leyton Orient	H
9 Grimsby Town	A	11 Swansea Town	A
16 Preston North End	H	18 Plymouth Argyle	H
23 Leyton Orient	A	25 Charlton Athletic	A
30 Swansea Town	H	May	
December		2 (Final)	
7 Plymouth Argyle	A	*—Monday †—Tuesday	
14 Northampton T.	H	‡—Wednesday ¶—Thursday	
21 Bury	A	§—Friday	
¶26 Sunderland	H		
28 Sunderland	A		

These Fixtures are the copyright of the Football League Limited and are printed by their permission under License No. 2. They must not be reproduced in whole or in part without permission from the Football League Limited.

WHEN BUYING YOUR NEXT NEW OR USED CAR
CONSULT—

WALLACE ARNOLD SALES & SERVICE LTD.

VAUXHALL/BEDFORD MAIN DEALER

123 HUNSLET ROAD, LEEDS 10

Telephone 30131

GRIFFIN HOTEL

(LEEDS AIR TERMINAL)

Garages nearby.
Fully Licensed
Residential Hotel.

120 Bedrooms
many with
private bathrooms

Ideal for
Meetings, Dinners
and Banquets

BOAR LANE, LEEDS 1

Telephone 36131

CENTRAL LEAGUE FIXTURES AND RESULTS

1963	Result	1964	Result
August		January	
24 Stoke City	H 1-0	4	
§30 Bury	A 1-2	11 Manchester City	A
September		18 Blackpool	H
* 2 Wolverhampton W.	A 0-6	25 Newcastle United	H
7 Manchester City	H 1-2	February	
* 9 Aston Villa	A 2-1	1 Blackburn Rovers	A
14 Blackpool	A	8 Barnsley	H
* 16 Wolverhampton W.	H	15 Sheffield United	A
21 Blackburn Rovers	H	22 West Bromwich	A
‡25 Aston Villa	H	29 Everton	H
28 Barnsley	A	March	
October		7 Sheffield Wednesday	A
5 Sheffield United	H	14 Chesterfield	H
† 8 Huddersfield Town	A	21 Burnley	A
12 West Bromwich	H	§27 Liverpool	A
19 Everton	A	28 Manchester United	H
26 Sheffield Wednesday	H	†31 Liverpool	H
November		April	
2 Chesterfield	A	4 Preston North End	A
9 Burnley	H	11 Bolton Wanderers	H
16 Manchester United	A	18 Derby County	A
23 Preston North End	H	25 Huddersfield Town	H
30 Bolton Wanderers	A	May	
December		2	
7 Derby County	H		
14 Stoke City	A	*—Monday	†—Tuesday
21 Bury	H	‡—Wednesday	§—Thursday
28 Newcastle United	A		§—Friday

All Records played in this Stadium are supplied by
VALLANCES RECORD BROWSERIE
The Headrow, Leeds 1 Telephone 33213

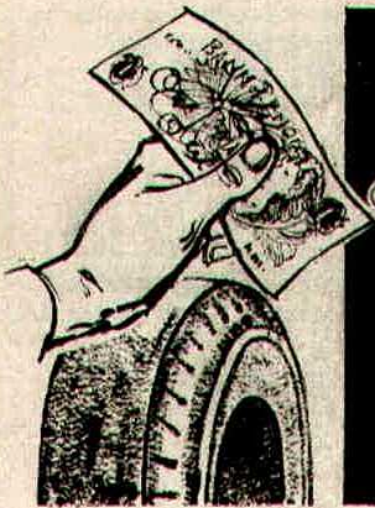
DR. BARNARDOS HOMES

TAKE CARE OF 7,500 NEEDY CHILDREN AND STILL
DEPEND ON PUBLIC SUPPORT

SEND YOUR DONATION TO:

BARNARDO HOUSE

STEPNEY CAUSEWAY, LONDON, E1



£1
ALLOWANCE
ON YOUR
OLD TYRE

Call in at Reid's Tyre Bay for 'while-you-wait' service and save money—maximum efficiency means maximum rebate! Ring for an appointment today.



23-27 Roundhay Rd., Leeds 7. Tel: 43561

YORKSHIRE EVENING POST SCORE BOARD
FOR CORRECT HALF-TIME SCORES

- A—Aston V. v Chelsea
- B—Bolton W. v Leicester C.
- C—Burnley v Birmingham
- D—Fulham v Arsenal
- E—Ipswich T. v Everton
- F—Liverpool v West Ham
- G—Manchester U. v West Brom
- H—Sheffield U. v Sheffield W.
- I—Stoke C. v Nottingham F.
- J—Tottenham H. v Blackpool
- K—Wolverhampton v Blackburn R.

- L—Charlton A. v Huddersfield T.
- M—Grimsby T. v Newcastle U.
- N—Leyton O. v Southampton
- O—Plymouth A. v Derby C.
- P—Portsmouth v Norwich C.
- Q—Preston N.E. v Middlesbrough
- R—Sunderland v Manchester C.
- S—Bradford v Brighton
- T—Halifax T. v Aldershot
- U—Blackpool Res v United Res.

There's NO BETTER BEER than



BENTLEY'S YORKSHIRE BREWERIES LTD.
WOODLESFORD, LEEDS

Published by Leeds United Association Football Club Ltd, Elland Rd., Leeds 11
Printed by J. Rostron & Son, Ltd., West Leeds Printing Works, Leeds 12

The National Playing Fields Association

President : H.R.H. The Prince Philip, Duke of Edinburgh, K.G., K.T.

Donations to help in providing playing fields and children's playgrounds throughout the country will be gratefully received and acknowledged by

The General Secretary 71 ECCLESTON SQUARE, LONDON, S.W.1

FOR FIRST-CLASS CUISINE VISIT

The Savoy Restaurant and Grill

FULLY LICENSED OPEN DAILY 11.30 a.m.—MIDNIGHT

16 MERRION STREET, LEEDS 1

FOR TABLE RESERVATIONS—TELEPHONE 26857

J. M. HAYWOOD

Watchmaker and Jeweller

7 Day Repair Service with
6 Months Guarantee

132a BEESTON ROAD, LEEDS

THIS SPACE TO LET

For Terms apply
SPORTS PUBLICATIONS
46 Watford Way
London N.W. 4

THIS SPACE TO LET

For terms apply

SPORTS PUBLICATIONS, 46 Watford Way, London, N.W.4

DR. BARNARDO'S HOMES

care for over 7,500 children
and depend on public support

PLEASE HELP

Gifts of any amount will be
warmly welcomed
at

**BARNARDO HOUSE
STEPNEY CAUSEWAY
LONDON E.1**

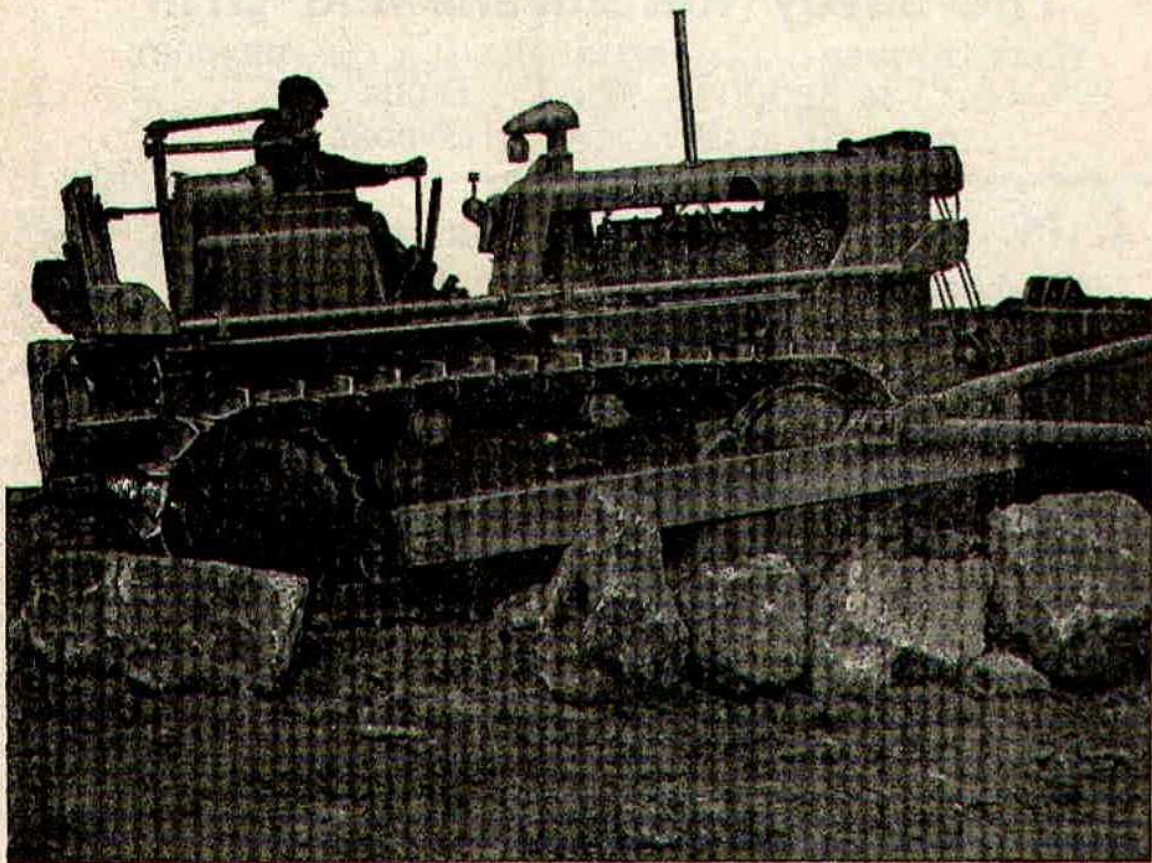
FRANK STUBLEY, Ltd

**PAINTING AND
CLEANING
CONTRACTORS**

Building Washing. Office Cleaning
Paint or Lime Washing
Painting and Window Cleaning

1 ALBION STREET, LEEDS 1
Telephone 28323

PUSH
AHEAD WITH
JOHN
FOWLER



Fowlers is a high-power go-ahead organisation, manufacturing the only completely British-designed range of crawler tractors, and supplying them, as well as locomotives, to more than 50 countries. Push ahead with Fowlers in a job with real security and real rewards.

in a job with a **FUTURE!**

Immediate vacancies for skilled engineers

JOHN FOWLER & CO (LEEDS) LTD, HUNSLET, LEEDS 10